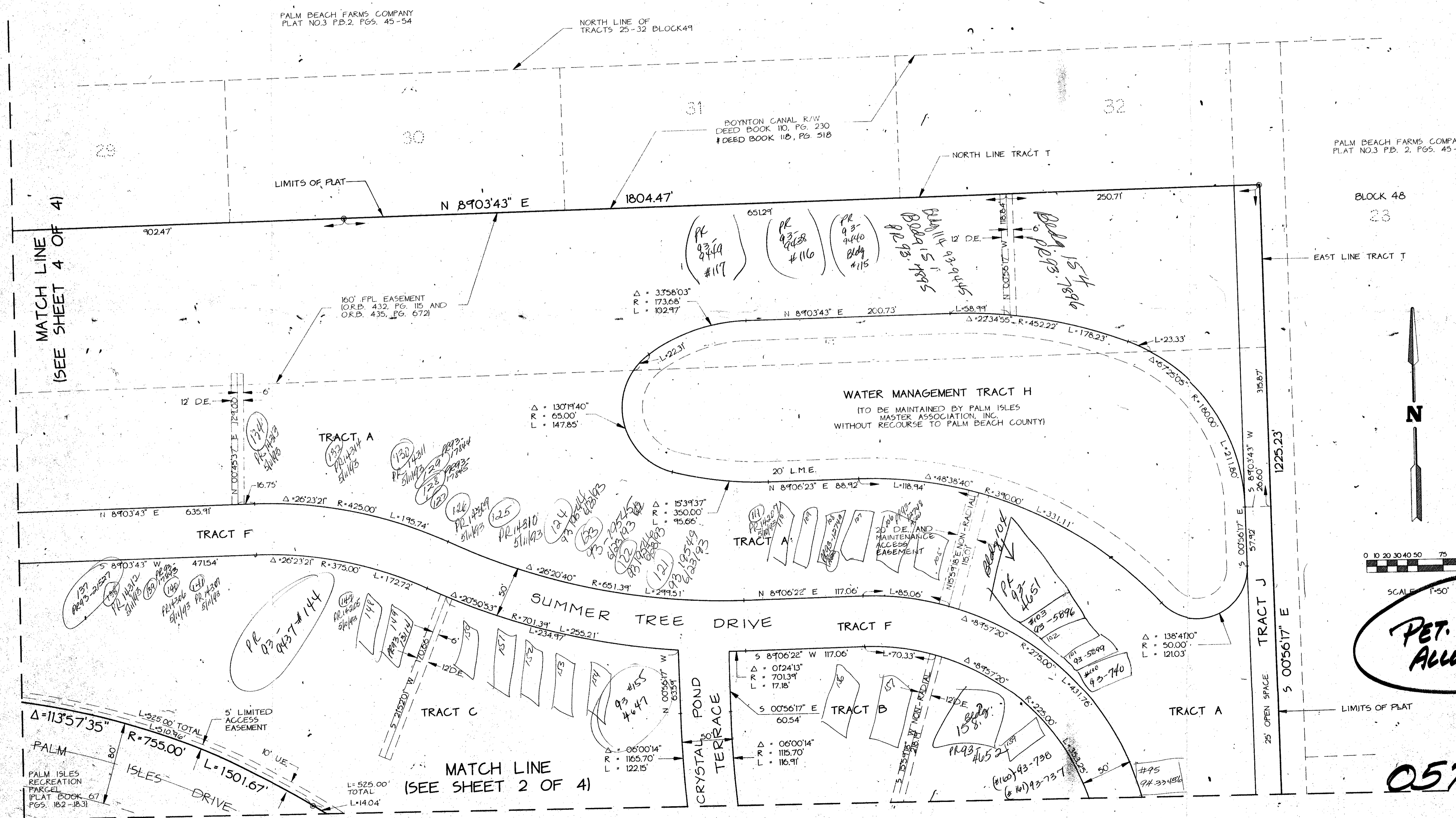
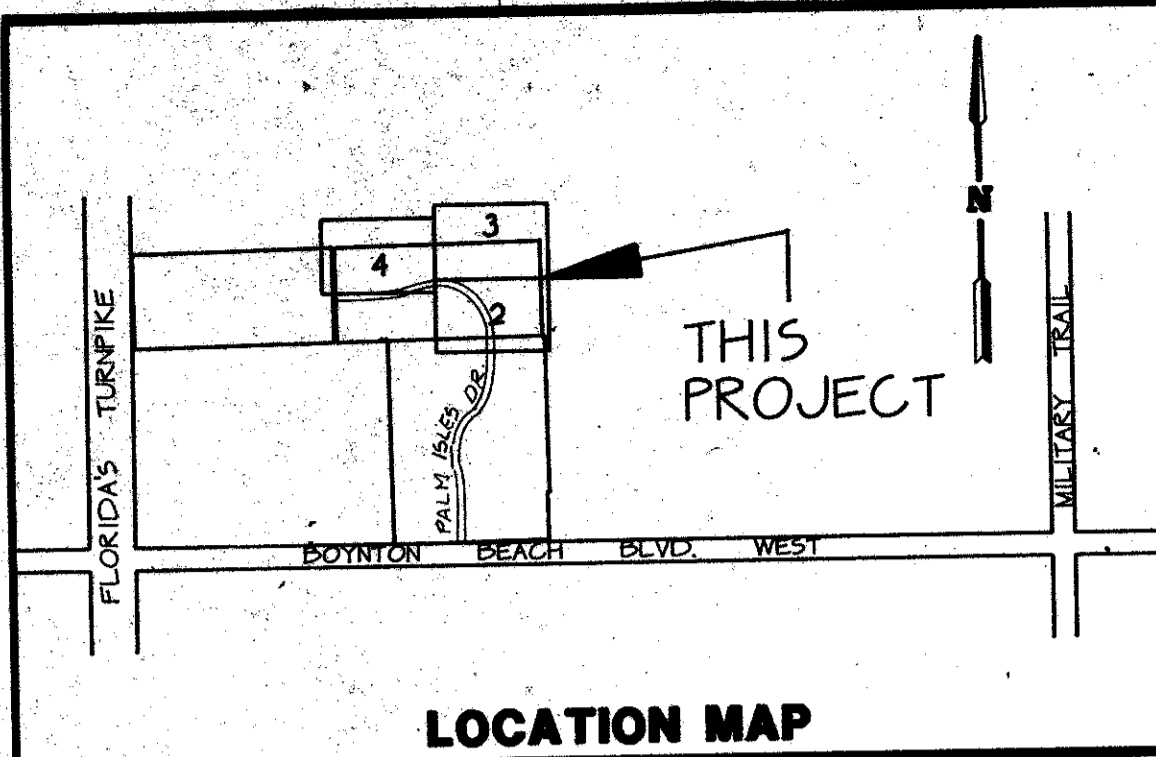


PALM ISLES II-A, A P.U.D.

A REPLAT OF A PORTION OF TRACT T OF PALM ISLES, A P.U.D.
 AS RECORDED IN PLAT BOOK 67, PAGES 116 THROUGH 127 INCLUSIVE OF THE PUBLIC RECORDS OF PALM BEACH COUNTY, FLORIDA
 IN SECTION 21, TOWNSHIP 42 SOUTH, RANGE 45 EAST, PALM BEACH COUNTY, FLORIDA

THIS INSTRUMENT PREPARED BY JAMES E. PARK, P.L.S.
 WILLIAMS, HATFIELD & STONER, INC. - ENGINEERS PLANNERS SURVEYORS
 1325 SOUTH CONGRESS AVENUE, SUITE 118, BOYNTON BEACH, FLORIDA 33426

SHEET 3 OF 4



SUBDIVISION * PALM ISLES II-A
 BOOK 67 PAGE 177
 FLOOD ZONE B FLOOD MAP #185A
 QUAD #50 ZONING RS
 SE ZIP CODE 33437
 PUD NAME SOLING
 21/51/12

PET. 87-92
 ALLOC. #0001

0571-003

PALM ISLES II-A 69/177